



# multifunctional Farming for the sustainability of European Agricultural Landscapes

Project N°: 2016-1-SK01-KA202-022502

## FEAL CATALOGUE

### The consolidation of national typologies with European agricultural landscapes

Bundesamt fuer Naturschutz: Schutzwuerdige Landschaften in Deutschland

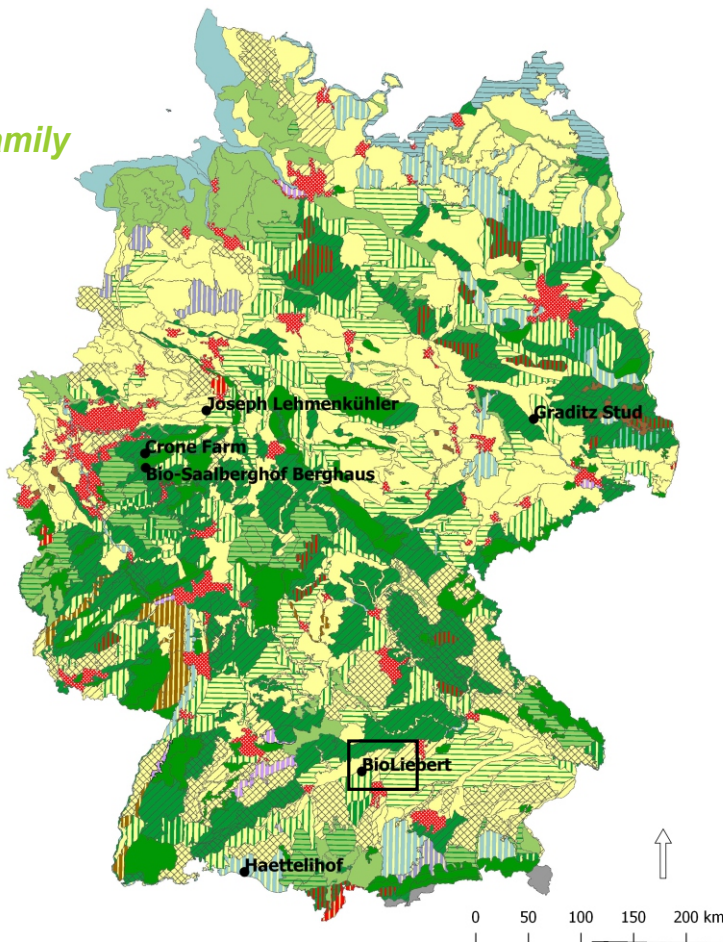
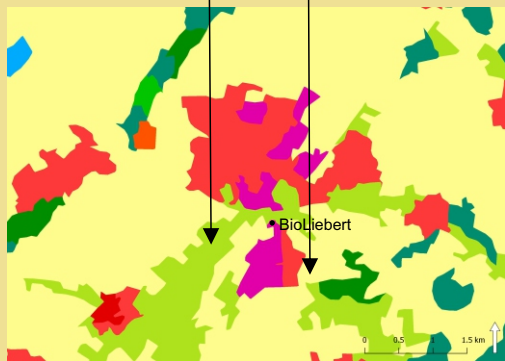
Germany

Western Northern Wertingen

*BioLiebert - organic farm of the Liebert family*

National landscape type:  
**Woody or wooded cultural landscape**

Land cover CLC 2012:  
**Agricultural areas, pastures;  
Non-irrigated arable land**



<http://www.geodienste.bfn.de/ogc/wms/landschaften>

E-atlas

European agricultural landscapes

Pasture

E-atlas

Rural areas

### Landscape character and the natural, cultural, and historical heritage

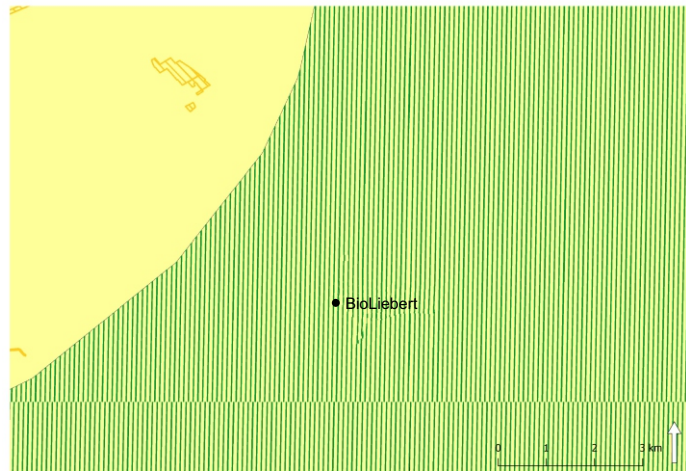


Funded by the Erasmus+ Programme of the European Union

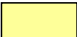




This project has been funded with support from the European Commission. This publication reflects the views only of the author, and the Commission cannot be held responsible for any use which may be made of the information contained therein.

## Landscape types

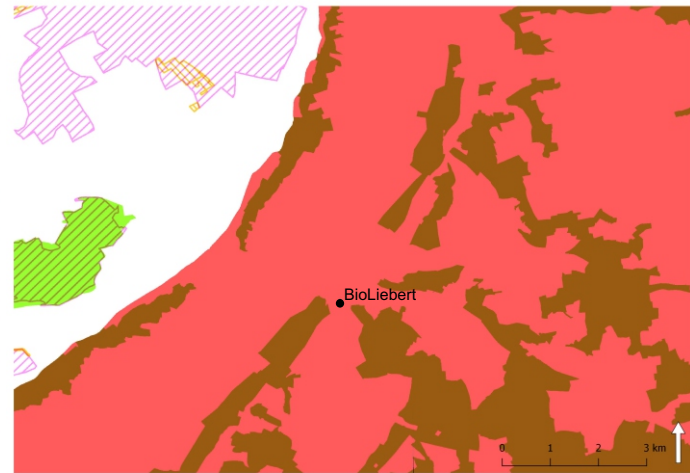


### Legend

-  Arable, open cultural landscape
-  Other wooded landscape
-  Woody or wooded cultural landscape

Bundesamt fuer Naturschutz: Schutzwuerdige Landschaften in Deutschland  
<http://www.geodienste.bfn.de/ogc/wms/landschaften>

## Natural protected areas



Bundesamt fuer Naturschutz: Schutzgebiete  
<http://www.geodienste.bfn.de/ogc/wms/schutzgebiet>



***Natura 2000 - wetlands „renaturalised and managed “ by goats.***



***Natura 2000 - concerns the last remnants of a formerly extended fen in the Eastern Swabian Donauried between Höchstädt and Wertingen. The biotopes host numerous rare species (e.g. bird's eye primula, globeflower, marsh gentian, various orchids, lesser marbled fritillary, ...).***