



# multifunctional Farming for the sustainability of European Agricultural Landscapes

Project N°: 2016-1-SK01-KA202-022502

## FEAL CATALOGUE

### The consolidation of national typologies with European agricultural landscapes

Bundesamt fuer Naturschutz: Schutzwuerdige Landschaften in Deutschland

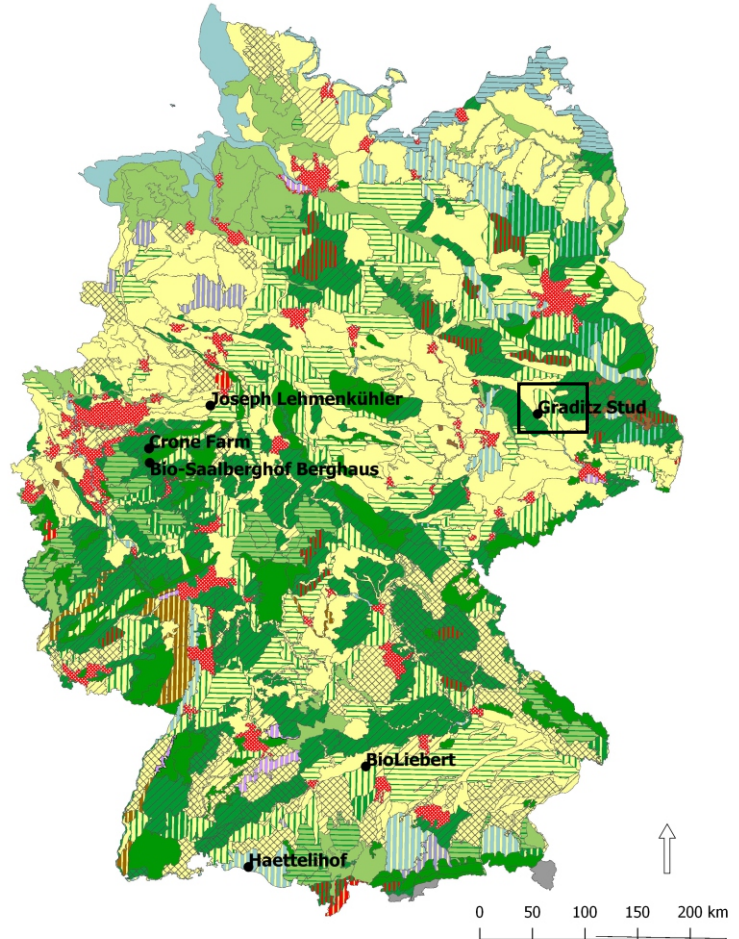
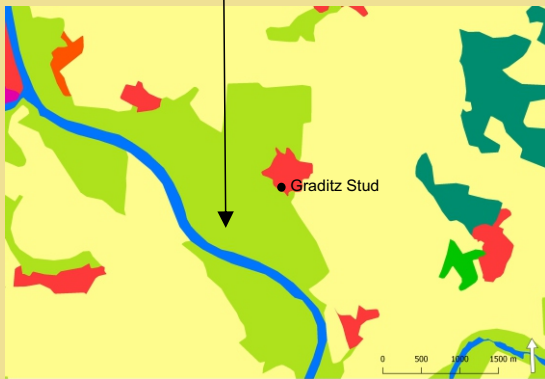
Germany

Elbe river flat

Graditz Stud Farm

National landscape type:  
*Elbe-Elster lowland, arable, open cultural landscape, arable, open cultural landscape*

Land cover CLC 2012:  
*Agricultural areas - pastures*



European agricultural landscapes

E-atlas Farmland

<http://www.geodienste.bfn.de/ogc/wms/landschaften>

### Landscape character and the natural, cultural, and historical heritage

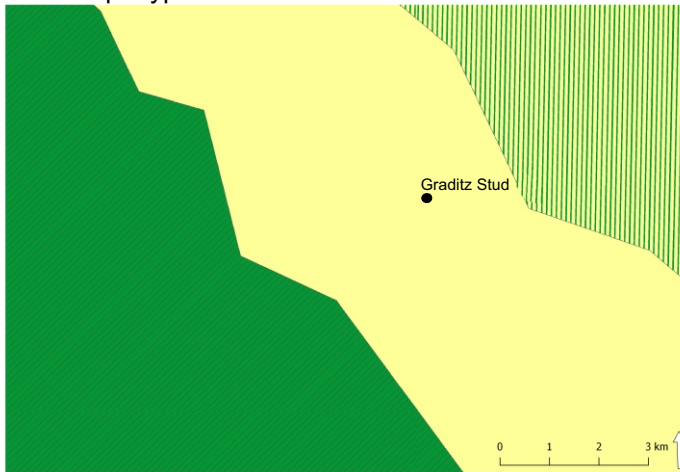


Funded by the Erasmus+ Programme of the European Union







This project has been funded with support from the European Commission. This publication reflects the views only of the author, and the Commission cannot be held responsible for any use which may be made of the information contained therein.

## Landscape types

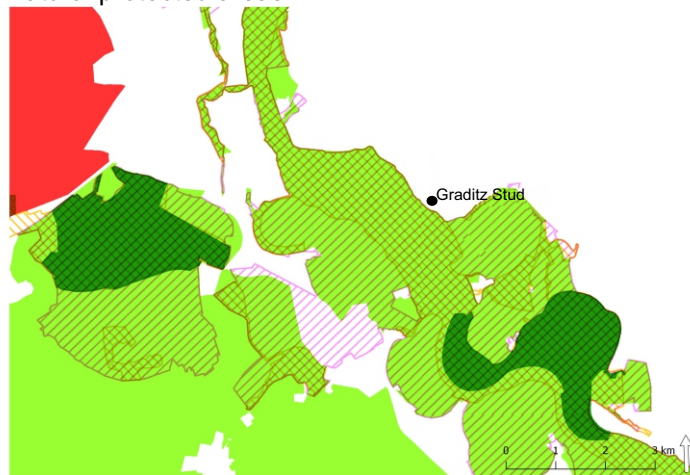


## Legend

-  Elbe-Elster lowland, arable, open cultural landscape
-  Arable, open cultural landscape
-  Other wooded landscape
-  Woody or wooded cultural landscape

Bundesamt fuer Naturschutz: Schutzwuerdige Landschaften in Deutschland  
<http://www.geodienste.bfn.de/ogc/wms/landschaften>

## Natural protected areas



Bundesamt fuer Naturschutz: Schutzgebiete  
<http://www.geodienste.bfn.de/ogc/wms/schutzgebiet>



*Flooded forests grazed by cows.*



*Extensively utilized pastures on the Elbe river flat.*



*Wetlands grazed by cows.*