



multifunctional Farming for the sustainability of European Agricultural Landscapes

Project N°: 2016-1-SK01-KA202-022502

FEAL CATALOGUE

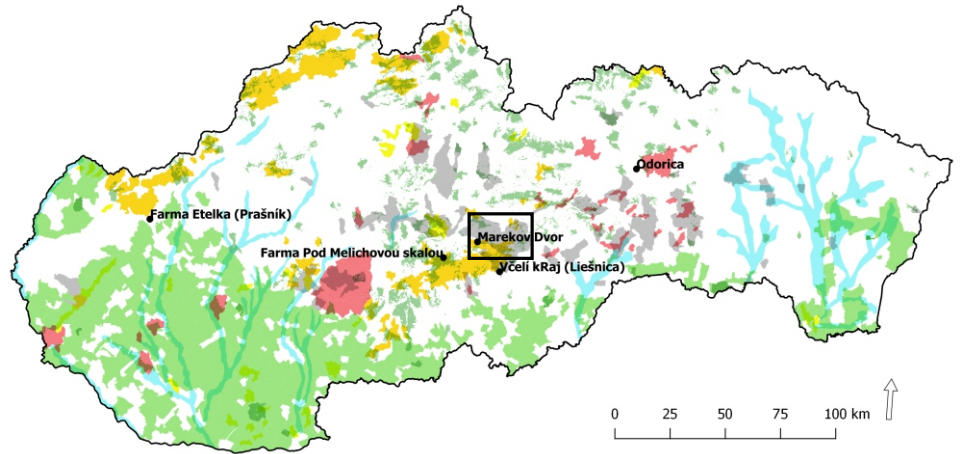
The consolidation of national typologies with European agricultural landscapes

The Landscape Atlas of the Slovak Republic

Slovakia

Veporské Vrchy Mts.

Marekov Dvor



<http://maps.geop.sazp.sk:80/geoserver/ows?>

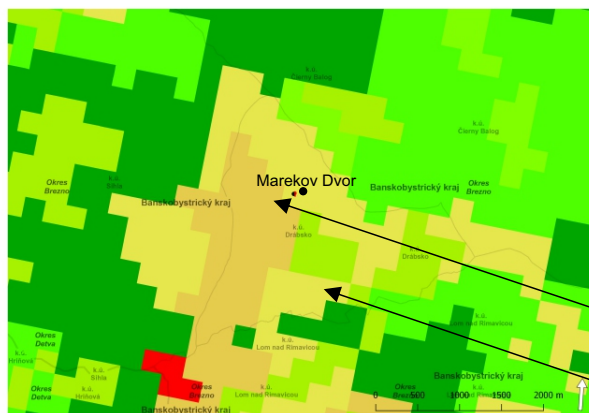
E-atlas

European agricultural landscapes

Farmland

E-atlas

Pastures



National landscape type:
Historical mining landscape
Traditional pastures and meadows

Land cover CLC 2012:
Heterogeneous agricultural areas and land
• principally occupied by agriculture, with significant areas of natural vegetation;
• Agricultural areas- pastures

Landscape character and the natural, cultural, and historical heritage






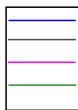
Funded by the Erasmus+ Programme of the European Union



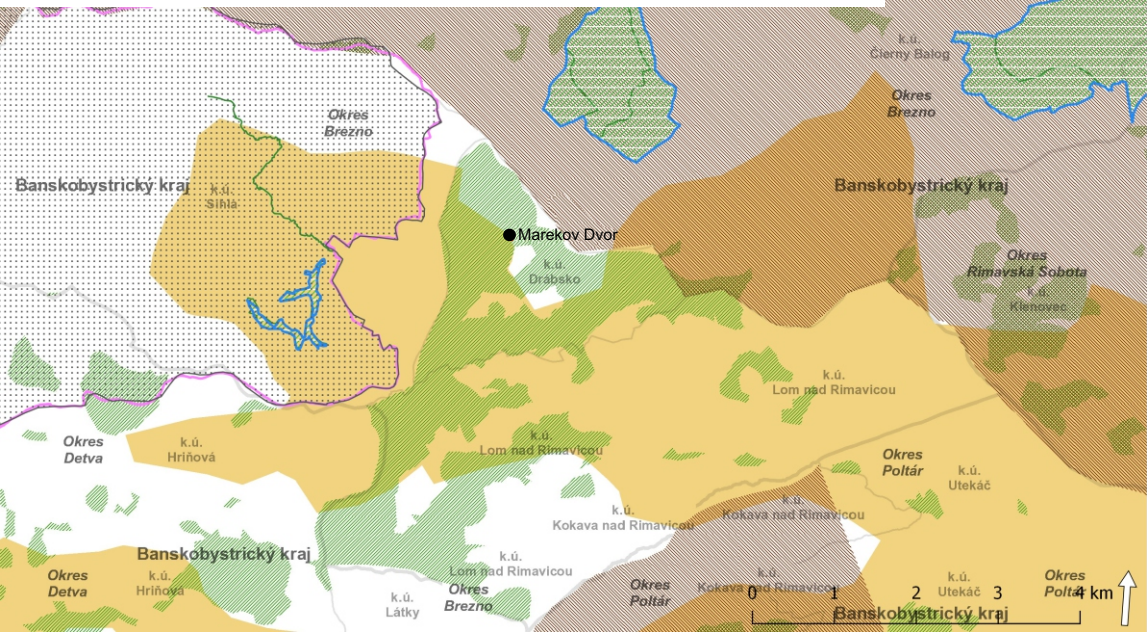
This project has been funded with support from the European Commission. This publication reflects the views only of the author, and the Commission cannot be held responsible for any use which may be made of the information contained therein.

Legend

-  Historical mining landscape
-  Traditional pastures and meadows
-  Cultural landscape with traditional land use and scattered settlements



Natural protected areas



The Landscape Atlas of the Slovak Republic, The National Geoportal SR
<http://maps.geop.sazp.sk:80/geoserver/ows?>



Traditional folk architecture - more than 100 years old agricultural buildings.



Traditional pastures and meadows with scattered settlements. Typical wooden architecture.