



multifunctional Farming for the sustainability of European Agricultural Landscapes

Project N°: 2016-1-SK01-KA202-022502

FEAL CATALOGUE

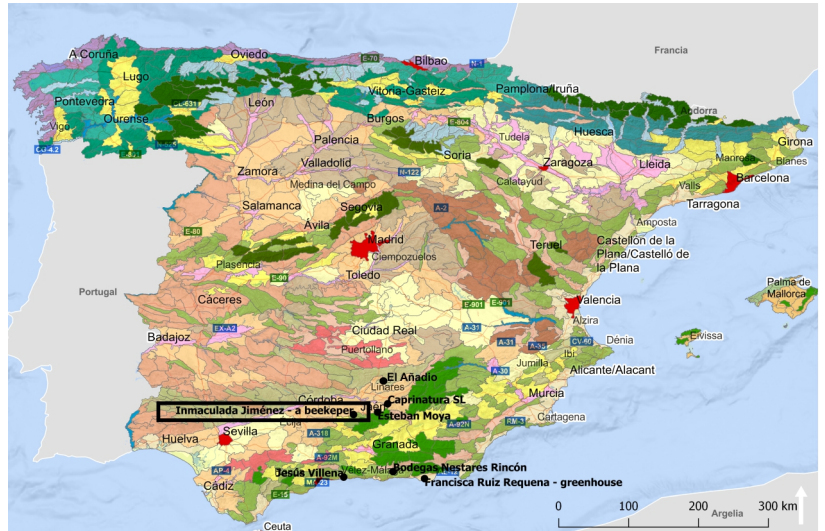
The consolidation of national typologies with European agricultural landscapes

Spain

The Natural Park of Cazorla, Segura and Las Villa
The Sierra de la Grana of Jamilen
The Sierra de Torre del campo

Inmaculada Jiménez - a beekeeper

Atlas of the Landscapes of Spain



<http://wms.mapama.es/sig/Biodiversidad/Paisaje/wms.aspx>

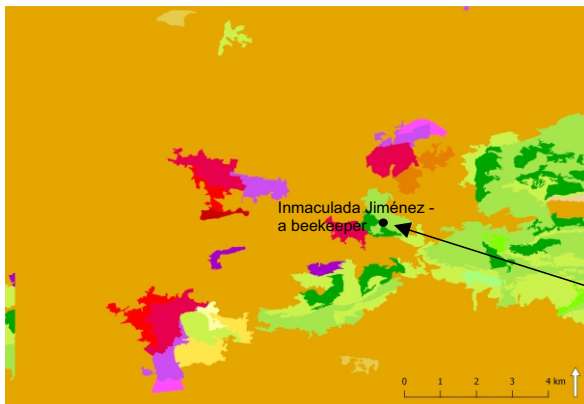
European agricultural landscapes

E-atlas

Farmland

E-atlas

Orchards

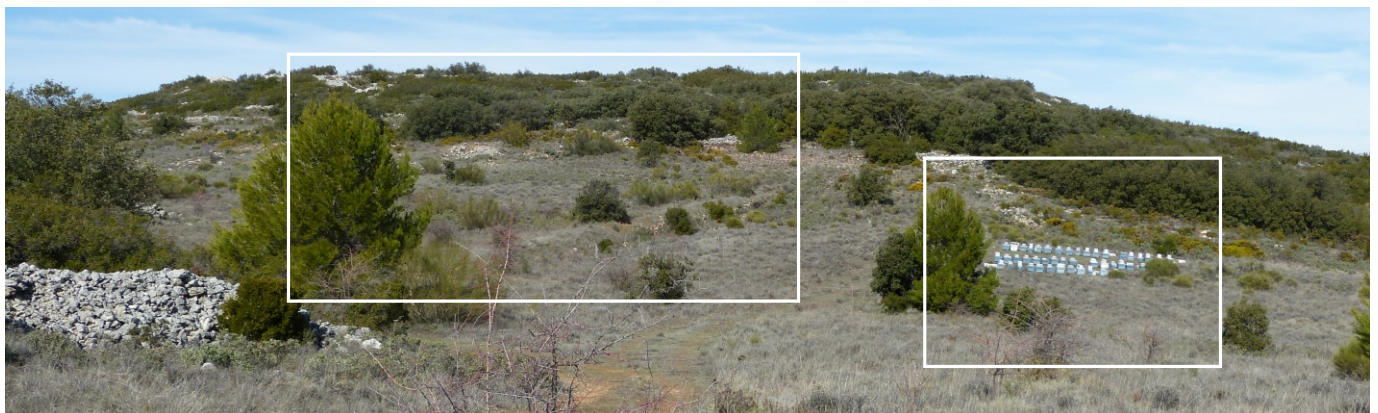


National landscape type: Mountain range of Beticas, Mediterranean and continental mountain ranges and mountains

Land cover CLC 2012:

- **Forest and semi natural areas, scrub and/or herbaceous vegetation associations, sclerophyllous vegetation**

Landscape character and the natural, cultural, and historical heritage

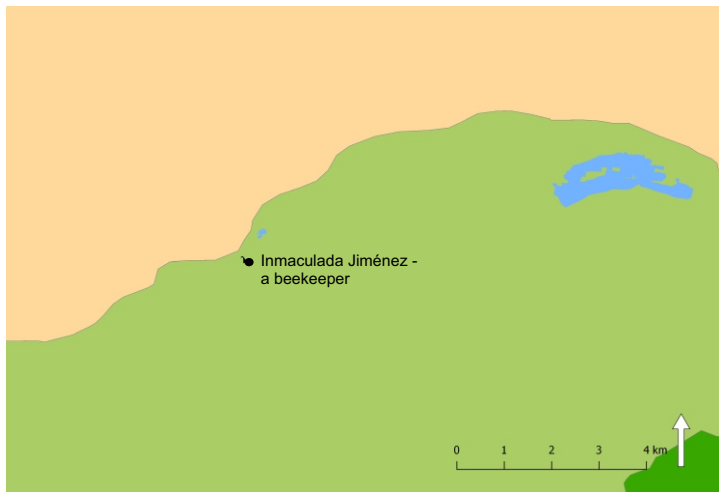


Funded by the Erasmus+ Programme of the European Union






This project has been funded with support from the European Commission. This publication reflects the views only of the author, and the Commission cannot be held responsible for any use which may be made of the information contained therein.

Landscape types and natural protected areas



Legend

-  Mountain range of Beticas, Mediterranean and continental mountain ranges and mountains
-  Andaluzia olive countryside
-  Protected natural space

Atlas de los Paisajes de España

<http://wms.mapama.es/sig/Biodiversidad/ENP/wms.aspx?>

Espacios Naturales Protegidos

<http://wms.mapama.es/sig/Biodiversidad/ENP/wms.aspx?>



Beehives are in different landscapes but with something in common, such as being isolated from the population settlements and far from the influence of civilisation.



Beehives are in a landscape in which rosemary, thyme, oak, eucalyptus, predominates.