



# multifunctional Farming for the sustainability of European Agricultural Landscapes

Project N°: 2016-1-SK01-KA202-022502

## FEAL CATALOGUE

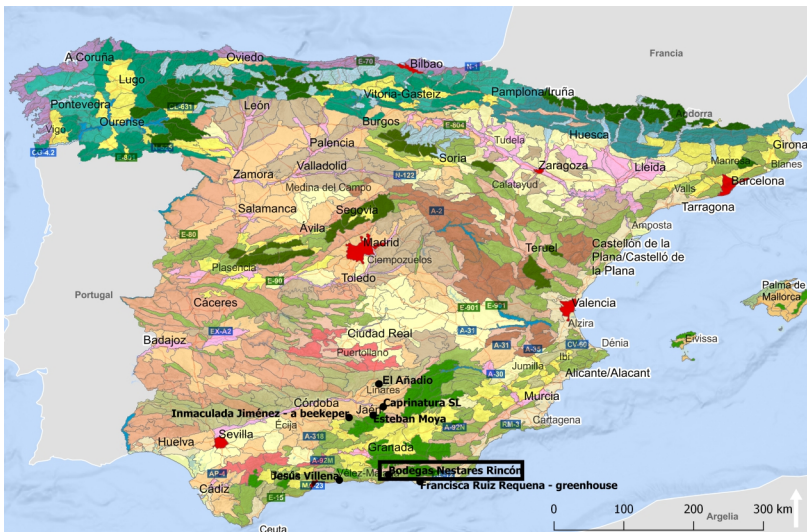
### The consolidation of national typologies with European agricultural landscapes

Spain

Contraviesa Mountain Range (Alpujarra region)

Bodegas Nestares Rincón

Atlas of the Landscapes of Spain



<http://wms.mapama.es/sig/Biodiversidad/Paisaje/wms.aspx>

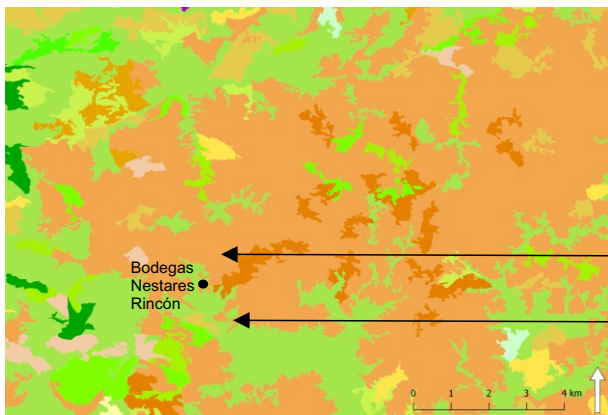
European agricultural landscapes

E-atlas

Orchards

E-atlas

Vineyards



National landscape type: **Coastal and sublittoral Beticas, Mediterranean and continental mountains**  
Land cover CLC 2012:  
**Agricultural areas - permanent crops, fruit trees and berry plantations**  
**Forest and semi natural areas, scrub and/or herbaceous vegetation associations, sclerophyllous vegetation**

## Landscape character and the natural, cultural, and historical heritage

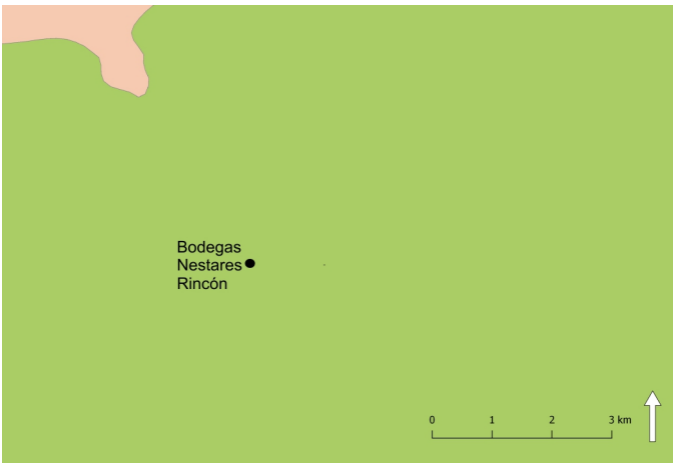


Funded by the Erasmus+ Programme of the European Union





This project has been funded with support from the European Commission. This publication reflects the views only of the author, and the Commission cannot be held responsible for any use which may be made of the information contained therein.

# Landscape types



## Legend

-  Beticos intramontane valleys and corridors, corridors
-  Coastal and sublittoral Beticas, Mediterranean and continental mountains

Atlas de los Paisajes de España

<http://wms.mapama.es/sig/Biodiversidad/ENP/wms.aspx?>

Natural protected areas are not present.



*Almond trees located in the Contraviesa Mountain Range of the Grenadian Alpujarra.*



*Vineyards on slopes.*