



multifunctional Farming for the sustainability of European Agricultural Landscapes

Project N°: 2016-1-SK01-KA202-022502

FEAL CATALOGUE

The consolidation of national typologies with European agricultural landscapes

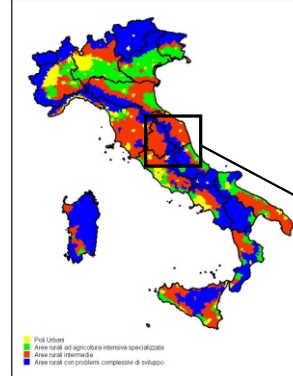
Italy

The Northern Tiber Valley and Valdichiana

The Aboca Farm

Administrative units of the central and northern part of Italy

Zoning of the rural areas



<https://www.reterurale.it/areerurali>



Base map: <https://wiki.openstreetmap.org/wiki/Tileserv>

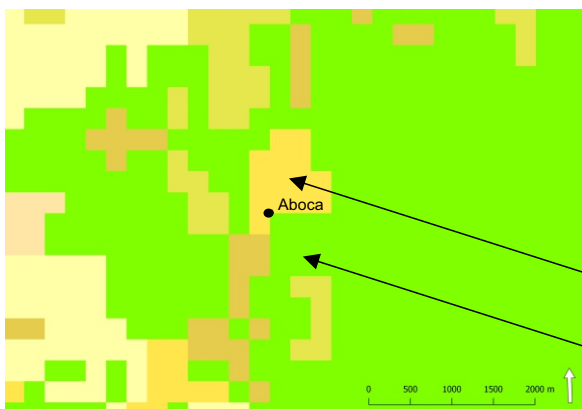
European agricultural landscapes

E-atlas

Open fields [EN]

E-atlas

Orchards [EN]



Administrative unit: **Region: Toscana; Province: Arezzo; Municipality: Sansepolcro**

Land cover CLC 2012:

- **Heterogeneous agricultural areas - complex cultivation pattern;**
- **Forest and semi natural areas - broad-leaved forest**

Landscape character and the natural, cultural, and historical heritage

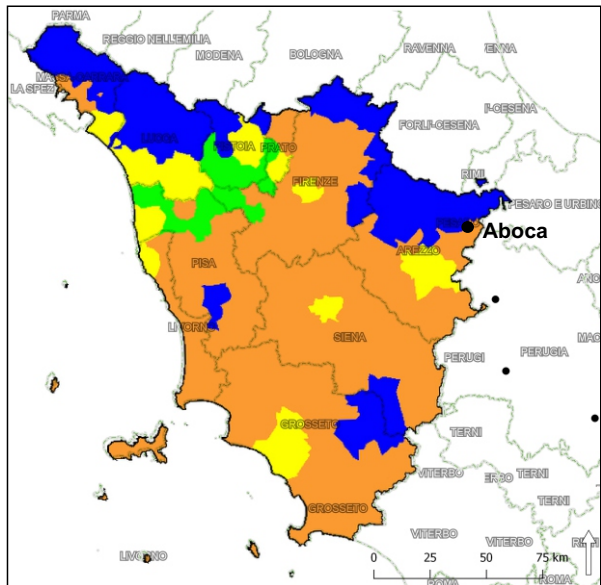


Funded by the Erasmus+ Programme of the European Union



This project has been funded with support from the European Commission. This publication reflects the views only of the author, and the Commission cannot be held responsible for any use which may be made of the information contained therein.

Zoning of the rural areas



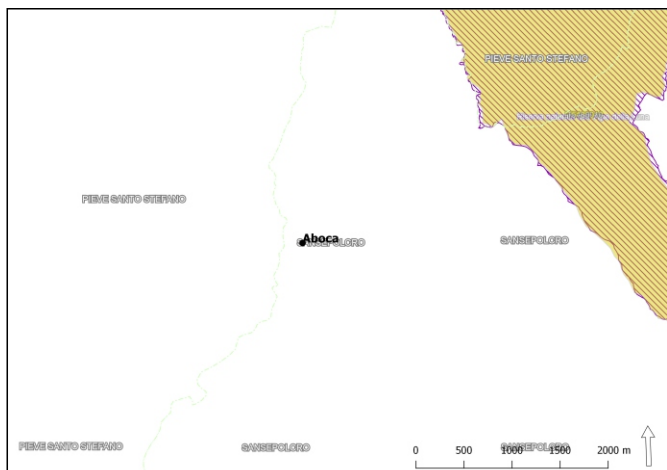
Legend

- Urban poles
- Rural agricultural areas and specialized intensive agriculture
- Intermediate rural areas
- Rural areas with overall development problems

Rete Rurale Nazionale 2014-2020, Zonizzazione e Cartografia

<http://www.reterurale.it/areerurali>

Natural protected areas



Legend

- Protected sites - wetlands of international importance (Ramsar)
- Protected sites - VI Official list of protected areas - EUAP

http://wms.pcn.minambiente.it/ogc?map%3D/ms_ogc/WMS_v1.3/Vettoriali/RAMSAR.map

http://wms.pcn.minambiente.it/ogc?map%3D/ms_ogc/WMS_v1.3/Vettoriali/EUAP.map



Aboca fields with "leopoldina".



Aboca hill fields with hawthorn